

MONUMENT RECORD

COUNTY OF ORANGE, CALIFORNIA

BLOCK 5948 MODULE 16

| MONUMENT TYPE | |
|---|---|
| SET <input type="checkbox"/> | FOUND <input checked="" type="checkbox"/> |
| CONTROL <input type="checkbox"/> | GOV'T. COR. <input type="checkbox"/> |
| STREET INT. <input checked="" type="checkbox"/> | MEANDER <input type="checkbox"/> |
| PROPERTY <input type="checkbox"/> | RANCHO <input type="checkbox"/> |

MONUMENT NAME
GPS 3034

DATE: APRIL, 1990

SURVEYED BY: DAVE JACQUES

MON. ELEV. _____
 SPIRIT TRIGONOMETRIC

DATUM NAD83

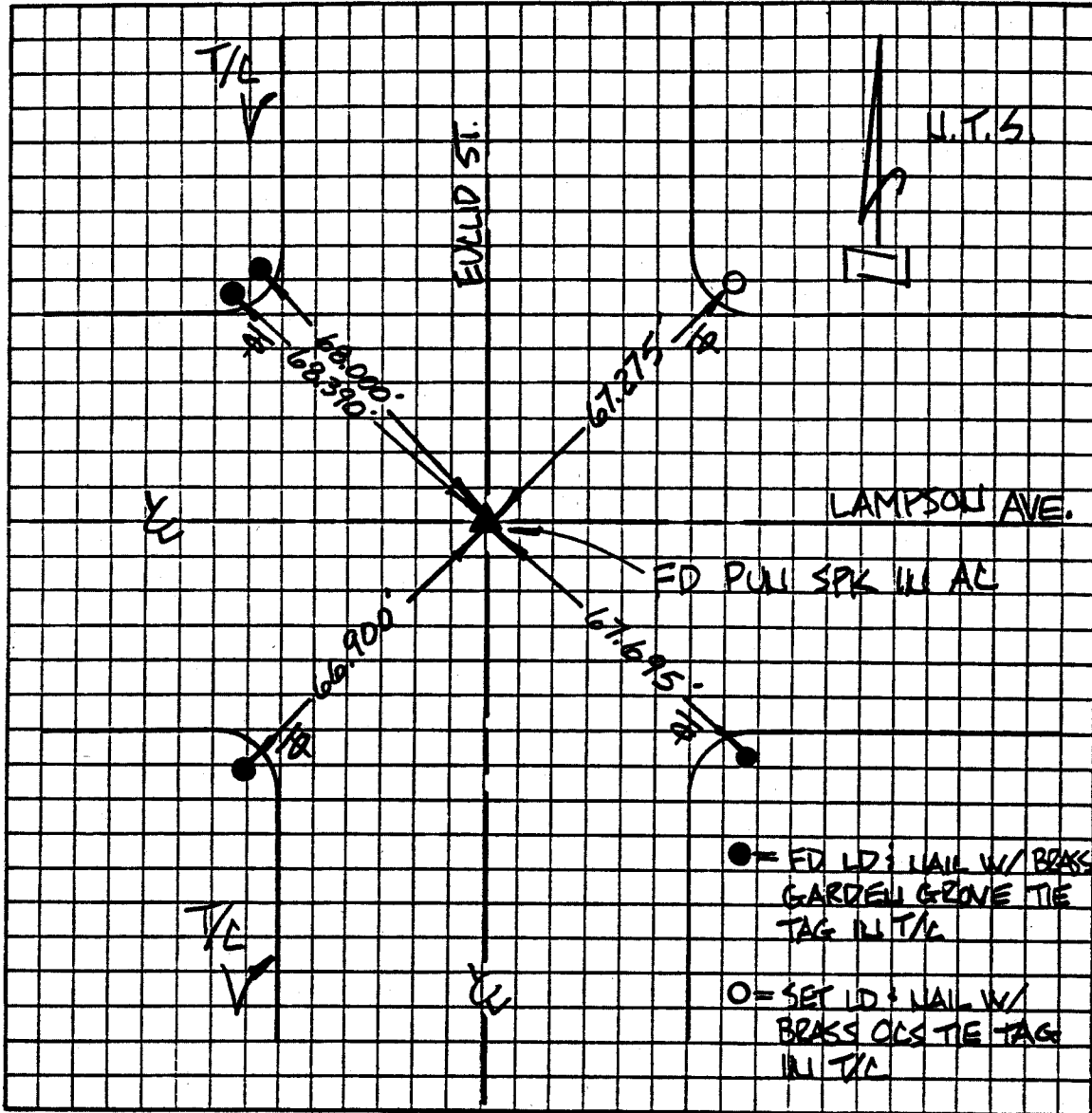
PHYSICAL DESCRIPTION OF MONUMENT: FOUND SPIKE WITH PUNCH MARK. (FLUSH)
Per TRACT 10108 MM 427 / 3
In the City of Garden Grove

RECTIONS TO MONUMENT: CENTERLINE INTERSECTION OF LAMPSON AND EUCLID. St.

192 T.B pg 798 F-5

Handwritten: AA 6-8-90

COUNTY OF ORANGE, CALIFORNIA



MONUMENT AREA DETAIL

REFERENCE MAPS OR MATERIAL:

THOMAS BROS P. 16, BA

'92 T.B. pg 798 F-5

COUNTY SURVEYOR DIVISION REFERENCE:

PER TRACT 10108, BK 427, P. 3

MONUMENT RECORD

CITY OF ORANGE, CALIFORNIA

BLOCK 5948 MODULE 19

MONUMENT TYPE

MONUMENT NAME

FOUND

GPS 3054

GOV'T. COR.

MEANDER

RANCHO

DATE: APRIL 1990

SURVEYED BY: DAVE JACQUES

ELEV. _____

DATUM NAD83

SPIRIT TRIGONOMETRIC

PHYSICAL DESCRIPTION OF MONUMENT: FOUND HEX ^{BAR} ~~BIT~~ DOWN 0.9 FEET IN A WELL
MONUMENT Per Tract No 10790 . MM 464 / 12

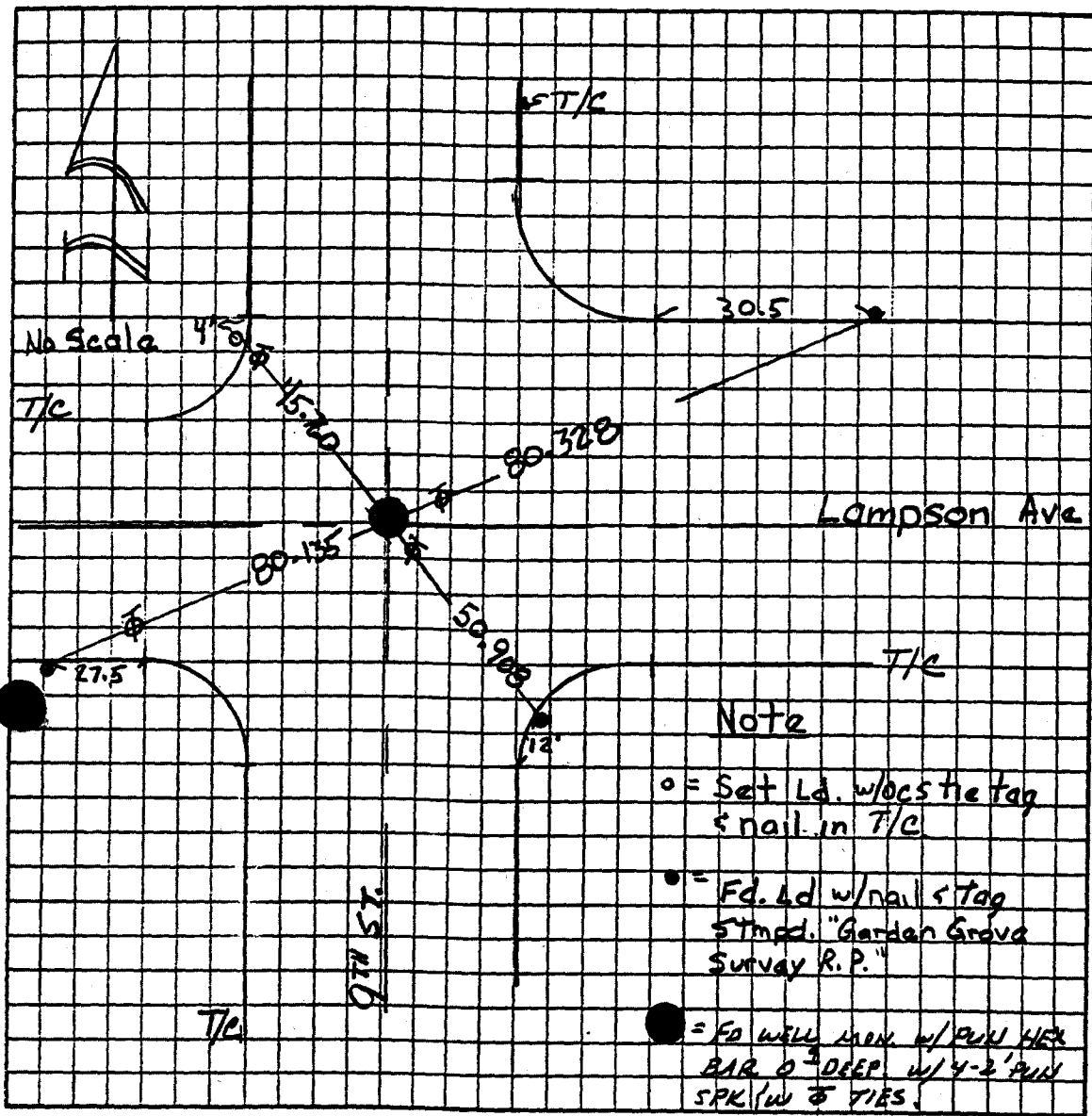
In the City of Garden Grove

ADJACENT LOCATIONS TO MONUMENT: CENTERLINE INTERSECTION 9THST AND LAMPSON AVE

192 T.B. Pg 798 G-5

THIS MONUMENT RECORD IS FOR THE REPORTING OF MONUMENT LOCATIONS ON NEW AND EXISTING MONUMENTS.

COUNTY OF ORANGE, CALIFORNIA



MONUMENT AREA DETAIL

REFERENCE MAPS OR MATERIAL:

192 T-3 pg 798 G-5

COUNTY SURVEYOR DIVISION REFERENCE:

TR 10790 MM 464/12

MONUMENT RECORD

CITY OF ORANGE, CALIFORNIA

BLOCK 5949 MODULE 14

| | MONUMENT | TYPE |
|-------------|-------------------------------------|---|
| SET | <input type="checkbox"/> | FOUND <input checked="" type="checkbox"/> |
| CONTROL | <input type="checkbox"/> | GOV'T. COR. <input type="checkbox"/> |
| STREET INT. | <input checked="" type="checkbox"/> | MEANDER <input type="checkbox"/> |
| PROPERTY | <input type="checkbox"/> | RANCHO <input type="checkbox"/> |

MONUMENT NAME
GPS 3074

DATE: APRIL, 1990

SURVEYED BY: DAVE JACQUES
TIES BY: Knox

DATUM NAD83

MON. ELEV. _____

SPIRIT TRIGONOMETRIC

FOUND BRASS HEX BAR IN CONCRETE, DOWN 1.1 FEET

PHYSICAL DESCRIPTION OF MONUMENT: "IN A WELL MONUMENT CAST" ORANGE COUNTY SURVEYOR.

Per Tract 5760

MM 2-2 / 37-39

In the City of Garden Grove

NS/12 / 49

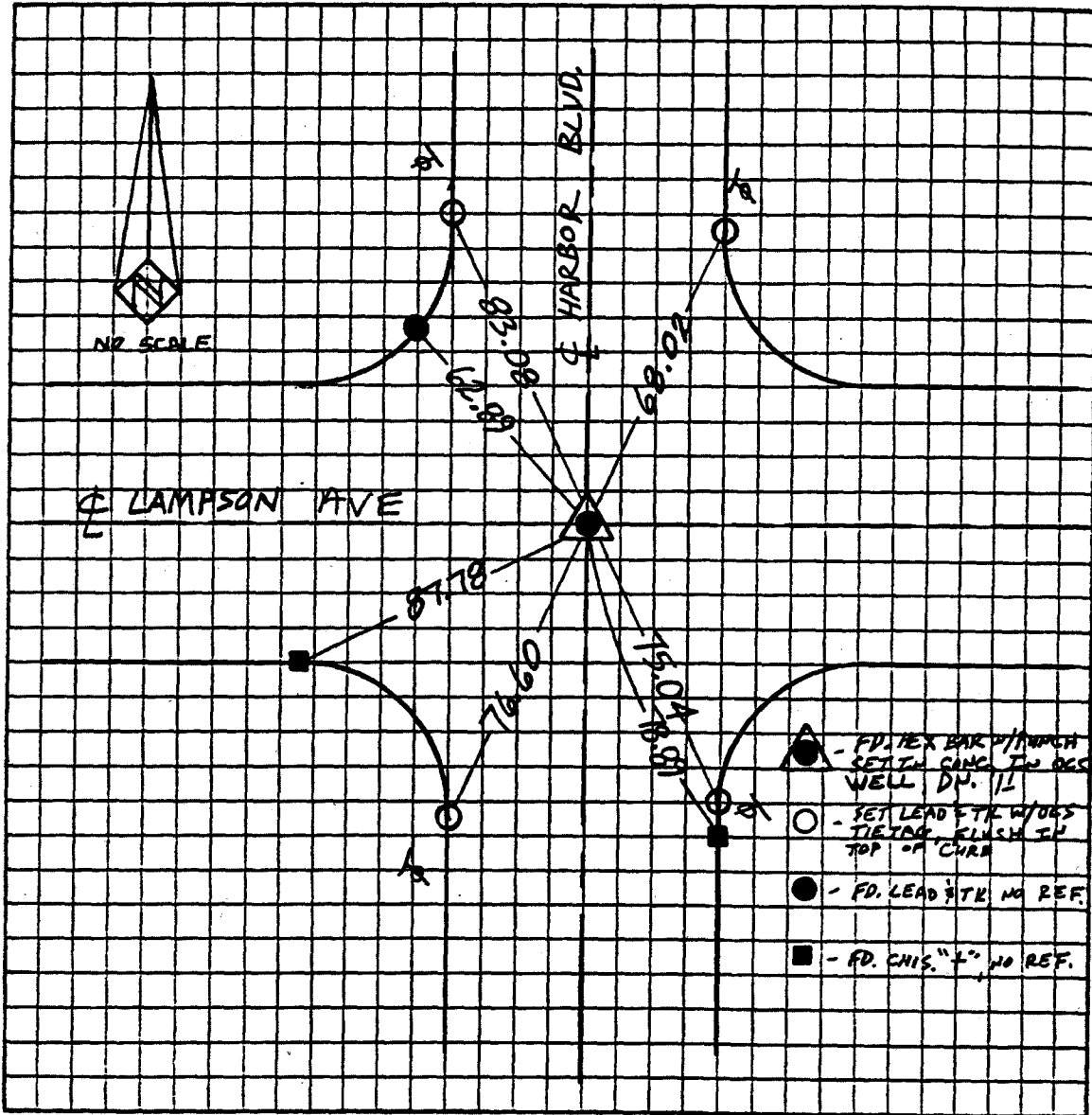
DIRECTIONS TO MONUMENT: CENTERLINE INTERSECTION OF HARBOR AND LAMPSON

'92 T.B. Pg. 798 J-5

THIS MONUMENT RECORD IS FOR THE REPORTING OF MONUMENT LOCATIONS ON NEW AND EXISTING MONUMENTS.

Ron Brvant

COUNTY OF ORANGE, CALIFORNIA



MONUMENT AREA DETAIL

REFERENCE MAPS OR MATERIAL:

192 T.B. pg. 798 J-5

COUNTY SURVEYOR DIVISION REFERENCE:

TR 5760 MM 208/37-39

RS 112/49

MONUMENT RECORD

COUNTY OF ORANGE, CALIFORNIA

BLOCK 5949 MODULE 47

| | | | |
|---|-------------|-------------------------------------|--|
| MONUMENT TYPE | | | |
| SET <input type="checkbox"/> | FOUND | <input checked="" type="checkbox"/> | |
| CONTROL <input type="checkbox"/> | GOV'T. COR. | <input type="checkbox"/> | |
| STREET INT. <input checked="" type="checkbox"/> | MEANDER | <input type="checkbox"/> | |
| PROPERTY <input type="checkbox"/> | RANCHO | <input type="checkbox"/> | |

MONUMENT NAME
GPS 3078

DATE: APRIL, 1990

SURVEYED BY: DAVE JACQUES

MON. ELEV. _____

DATUM NAD83

SPIRIT TRIGONOMETRIC

PHYSICAL DESCRIPTION OF MONUMENT: FOUND BRASS HEX BAR WITH PUNCH MARK. DOWN
1.1 FEET IN A WELL MONUMENT STAMPED "ORANGE COUNTY SURVEYOR." PER P.M. 6/9/25

In the City of Garden Grove

LOCATIONS TO MONUMENT: CENTERLINE INTERSECTION HASTER ^{Street} ~~BLVD.~~ AND CHAPMAN. AVE

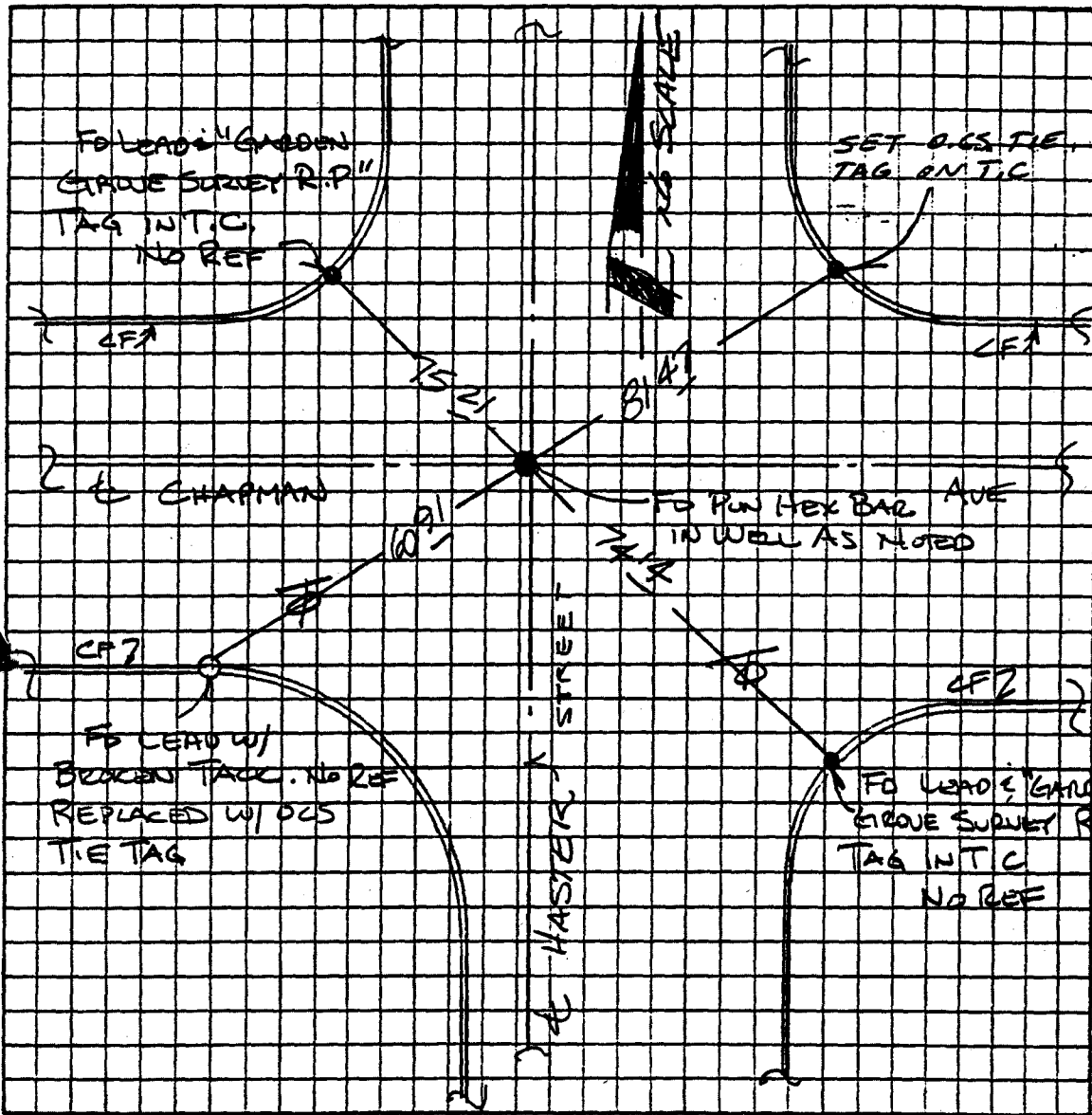
'92 T.B. pg 799 A-4

THIS MONUMENT RECORD IS FOR THE REPORTING OF MONUMENT LOCATIONS ON NEW AND EXISTING MONUMENTS.

Handwritten initials and date

GPS 3078 - 4 INT-X HASTER ST & CHAPMAN AVE.

COUNTY OF ORANGE, CALIFORNIA



MONUMENT AREA DETAIL

MS-SMYTHE & PARTY

REFERENCE MAPS OR MATERIAL:

T.B. MAPS PG 16 E 3

192 T.B. pg 799 A-4

COUNTY SURVEYOR DIVISION REFERENCE:

PM 69/25

MONUMENT RECORD

COUNTY OF ORANGE, CALIFORNIA

BLOCK 5849 MODULE 89

| MONUMENT TYPE | |
|---|---|
| SET <input type="checkbox"/> | FOUND <input checked="" type="checkbox"/> |
| CONTROL <input checked="" type="checkbox"/> | GOV'T. COR. <input type="checkbox"/> |
| STREET INT. <input checked="" type="checkbox"/> | MEANDER <input type="checkbox"/> |
| PROPERTY <input type="checkbox"/> | RANCHO <input type="checkbox"/> |

MONUMENT NAME
GPS 3090 GARDEN GROVE
BLVD. & LEWIS ST.

DATE: 10-1-90

SURVEYED BY: LEMOINE, ANDREW

MON. ELEV. _____

DATUM _____

SPIRIT TRIGONOMETRIC

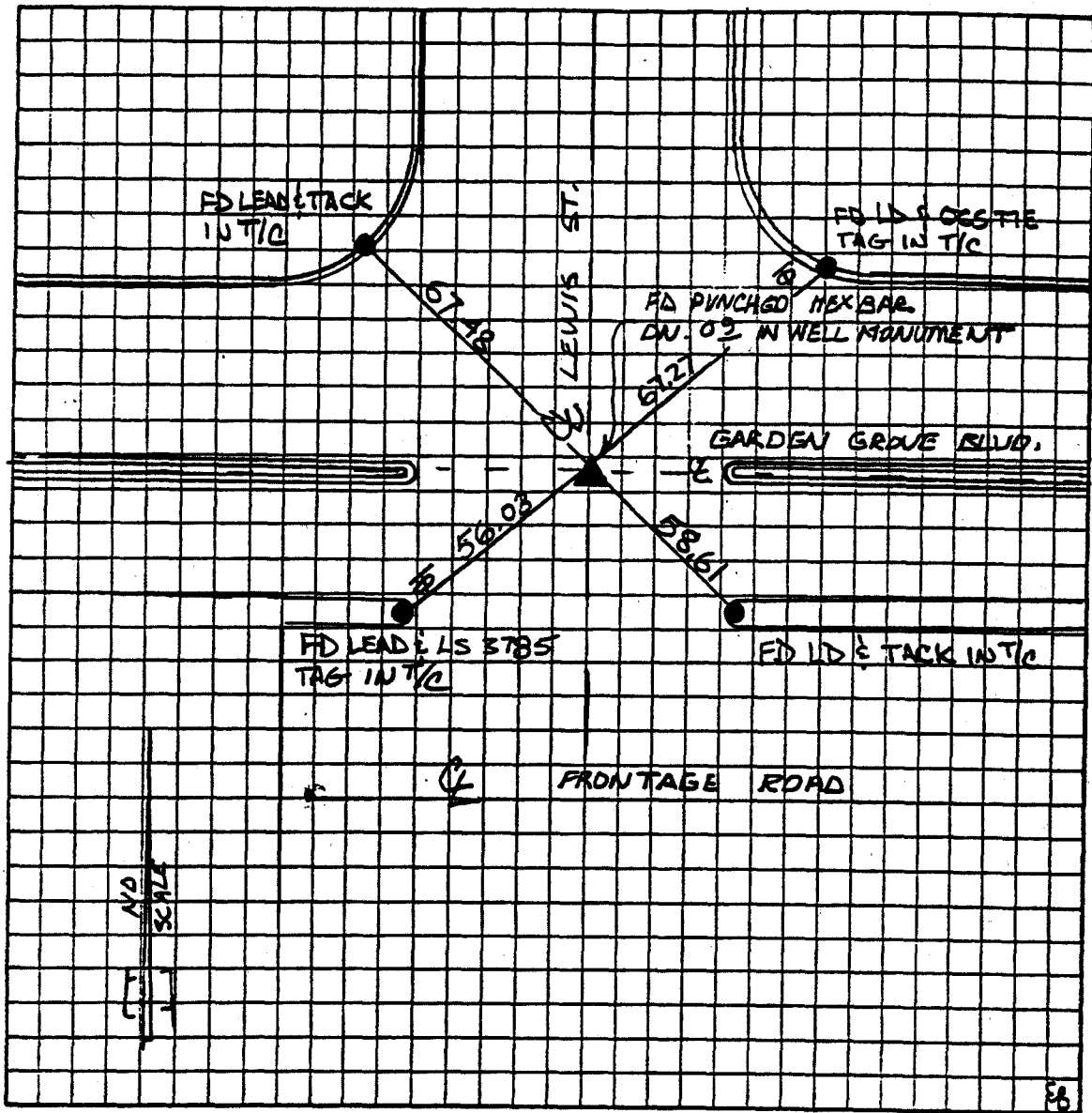
PHYSICAL DESCRIPTION OF MONUMENT: MONUMENT IS PUNCHED HEX
BAR DOWN 0.9 IN WELL MONUMENT

Per PM 85/25.

DIRECTIONS TO MONUMENT: APPARENT INTERSECTION OF
LEWIS AND GARDEN GROVE BLVD. IN THE
CITY OF Orange
(THOMAS BROS. PG 16 E-4)

'92 T.B. Pg. 799 B-6

COUNTY OF ORANGE, CALIFORNIA



MONUMENT AREA DETAIL

REFERENCE MAPS OR MATERIAL:

BPS 3090

THOMAS BROS PG 16 E 4

'92 T.B. Pg 799 B-6

COUNTY SURVEYOR DIVISION REFERENCE:

PM 85/25

DOCUMENT NO. **3624**

MONUMENT RECORD

COUNTY OF ORANGE, CALIFORNIA

BLOCK **5946** MODULE **48**

MONUMENT TYPE

SET FOUND
 CONTROL GOV'T. COR.
 STREET INT. MEANDER
 PROPERTY RANCHO

MONUMENT NAME

GPS 3624

DATE: **5/9/90**

SURVEYED BY **TC**

MON. ELEV.

DATUM

SPIRIT TRIGONOMETRIC

THOMAS GUIDE **'92 PG 797, H-4**

PLSS LOCATION

PHYSICAL DESCRIPTION OF MONUMENT:

FOUND PUNCHED HEX BAR, DOWN 0.8' IN CITY OF GARDEN GROVE WELL MONUMENT

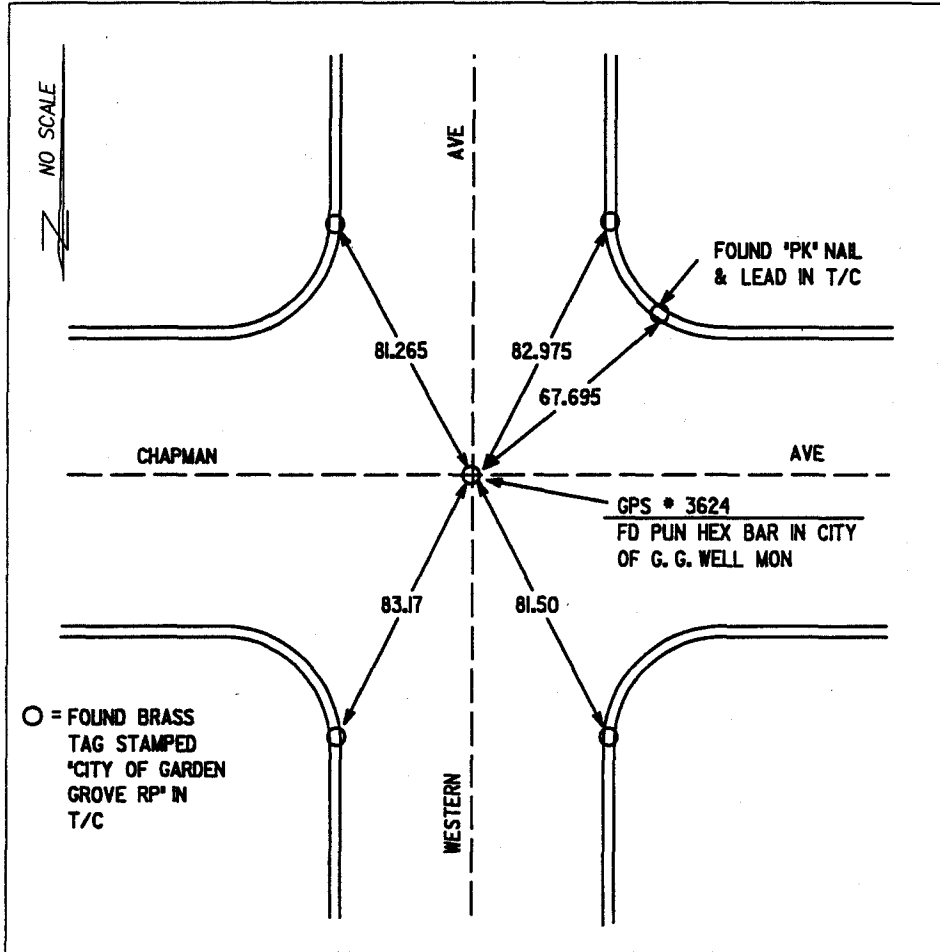
DIRECTIONS TO MONUMENT:

MONUMENT IS LOCATED AT THE CENTERLINE INTERSECTION OF CHAPMAN AVENUE AND WESTERN AVENUE, IN THE CITY OF GARDEN GROVE.

WM #13E

THIS MONUMENT RECORD IS FOR THE REPORTING OF MONUMENT LOCATIONS ON NEW AND EXISTING MONUMENTS.

COUNTY OF ORANGE, CALIFORNIA



MONUMENT AREA DETAIL

REFERENCE MAPS OR MATERIAL:

[Empty rectangular box for reference maps or material]

COUNTY SURVEYOR DIVISION REFERENCE:

PER CITY OF GARDEN GROVE TIE BOOK | PAGE 36A

DOCUMENT NO. 3633

MONUMENT RECORD

COUNTY OF ORANGE, CALIFORNIA

BLOCK 5946 MODULE 15

MONUMENT TYPE

- SET FOUND
- CONTROL GOV'T. COR.
- STREET INT. MEANDER
- PROPERTY RANCHO

MONUMENT NAME

G.P.S. 3633

DATE: 5/9/90

SURVEYED BY TC

MON. ELEV.

DATUM

- SPIRIT
- TRIGONOMETRIC

THOMAS GUIDE '92 PG. 797, G-5

PLSS LOCATION

PHYSICAL DESCRIPTION OF MONUMENT:

FOUND CITY OF GARDEN GROVE WELL MON & PUN HEX BAR, 1.1' DEEP (FULL OF WATER)

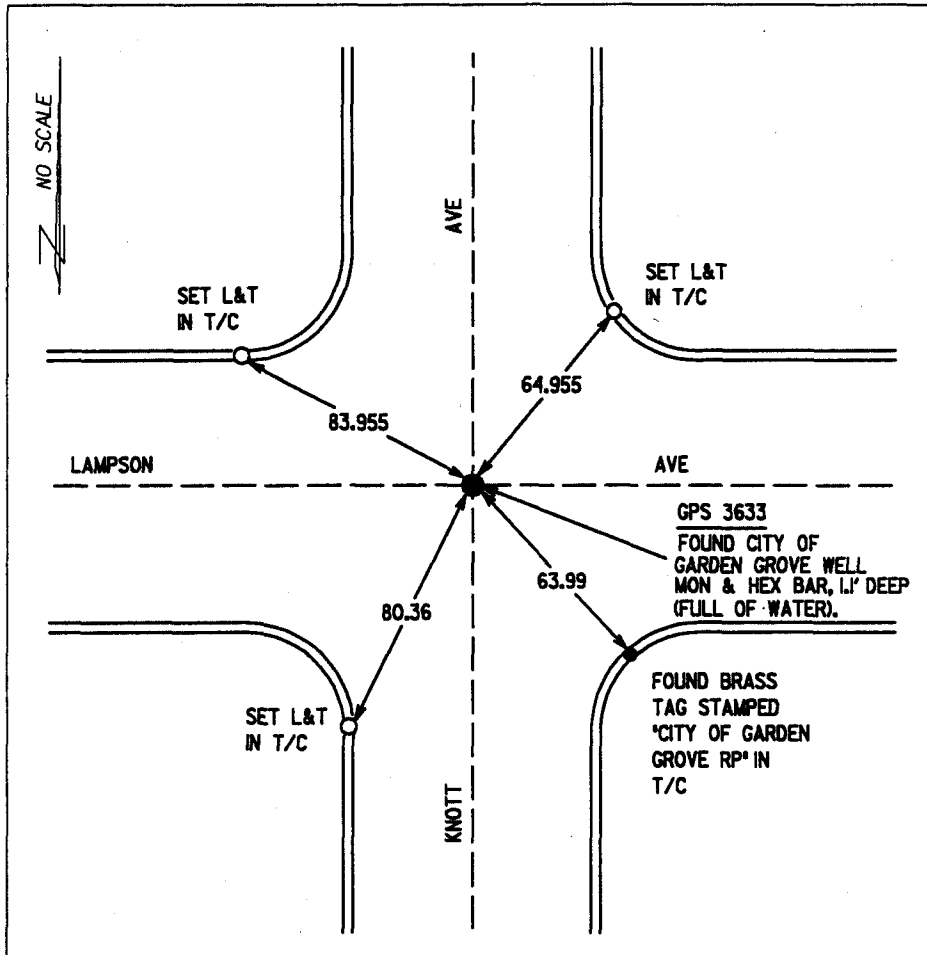
DIRECTIONS TO MONUMENT:

MONUMENT IS ON THE CENTERLINE OF THE INTERSECTION OF LAMPSON AVE. & KNOTT AVE., IN THE CITY OF GARDEN GROVE CA.

WM#13E

THIS MONUMENT RECORD IS FOR THE REPORTING OF MONUMENT LOCATIONS ON NEW AND EXISTING MONUMENTS.

COUNTY OF ORANGE, CALIFORNIA



MONUMENT AREA DETAIL

REFERENCE MAPS OR MATERIAL:

'92 THOMAS BROS. PG. 797, G-5
GARDEN GROVE TIE BOOK 1 PG. 62A

COUNTY SURVEYOR DIVISION REFERENCE:

RSB 149/21-36

MONUMENT RECORD

GPS# 4156

COUNTY OF ORANGE, CALIF. Block 5849 Module 65

MONUMENT TYPE

- Set Found
- Control Gov't. Cor.
- Street Int. Meander
- Property Rancho

MONUMENT NAME

GPS 4156

DATE: Sept. 4, 1990

SURVEYED BY: Lemoine/Andrew

THOMAS GUIDE: 799/A-7

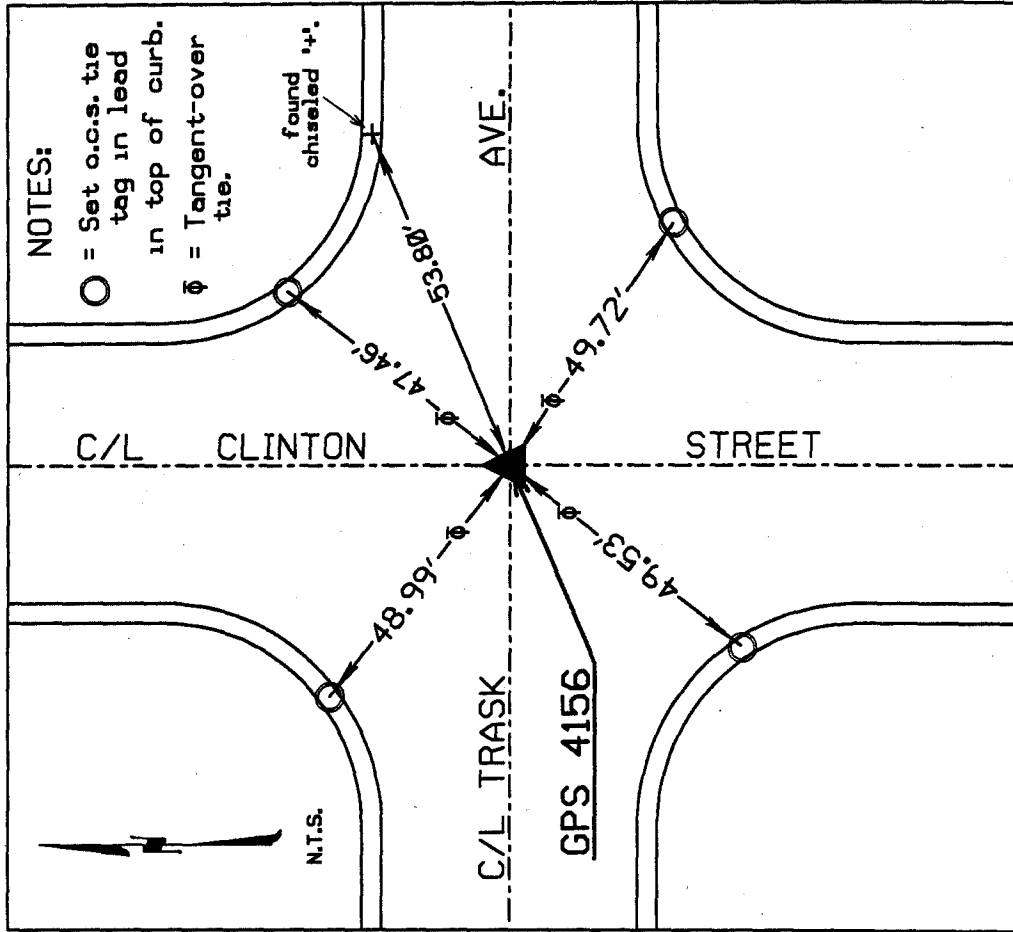
PHYSICAL DESCRIPTION OF MONUMENT

Found 1/2' square steel stock, down 1.0' in a large well monument.

DIRECTIONS TO MONUMENT

Located at the centerline intersection of Trask Ave. and Clinton Street, in the City of Garden Grove.

This monument record is for the reporting of monument locations on new and existing monuments.



NOTES:

- = Set o.c.s. tie tag in lead in top of curb.
- ⊕ = Tangent-over tie.

GPS# 4156

MONUMENT AREA DETAIL

REFERENCE MAPS OR MATERIAL

PM 237/12-13

MONUMENT RECORD

GPS# 4167

COUNTY OF ORANGE, CALIF. Block 5849 Module 62

MONUMENT TYPE

- Set Found
- Control Gov't. Cor.
- Street Int. Meander
- Property Rancho

MONUMENT NAME
GPS 4167

DATE: Sept. 5, 1990

SURVEYED BY:
Lemoine/Andrew

THOMAS GUIDE: 798/J-7

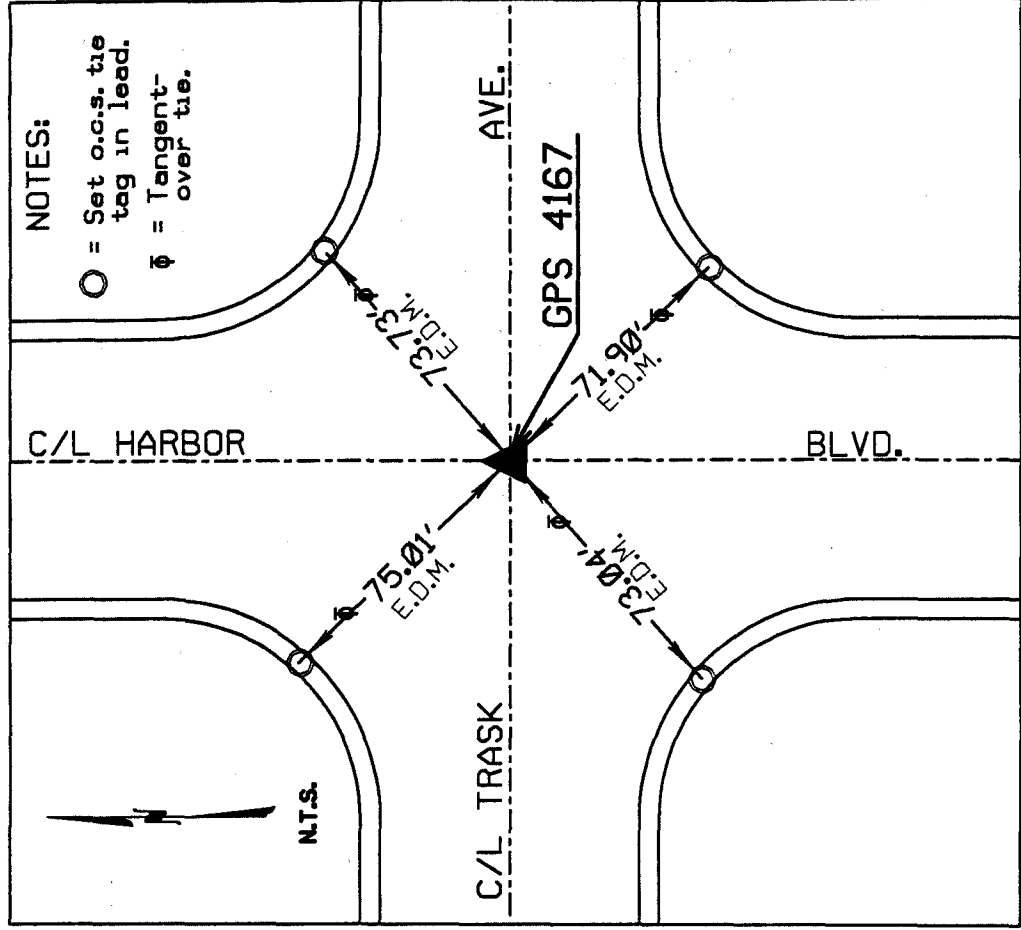
PHYSICAL DESCRIPTION OF MONUMENT

Found punched square 1/2" steel stock, down 1.1' in a well monument.

DIRECTIONS TO MONUMENT

Located at the centerline intersection of Harbor Blvd. and Trask Ave., in the City of Garden Grove.

This monument record is for the reporting of monument locations on new and existing monuments.



NOTES:

- = Set o.c.s. tie tag in lead.
- ⊕ = Tangent over tie.

MONUMENT AREA DETAIL

REFERENCE MAPS OR MATERIAL

PM 237/12-13

GPS# 4167